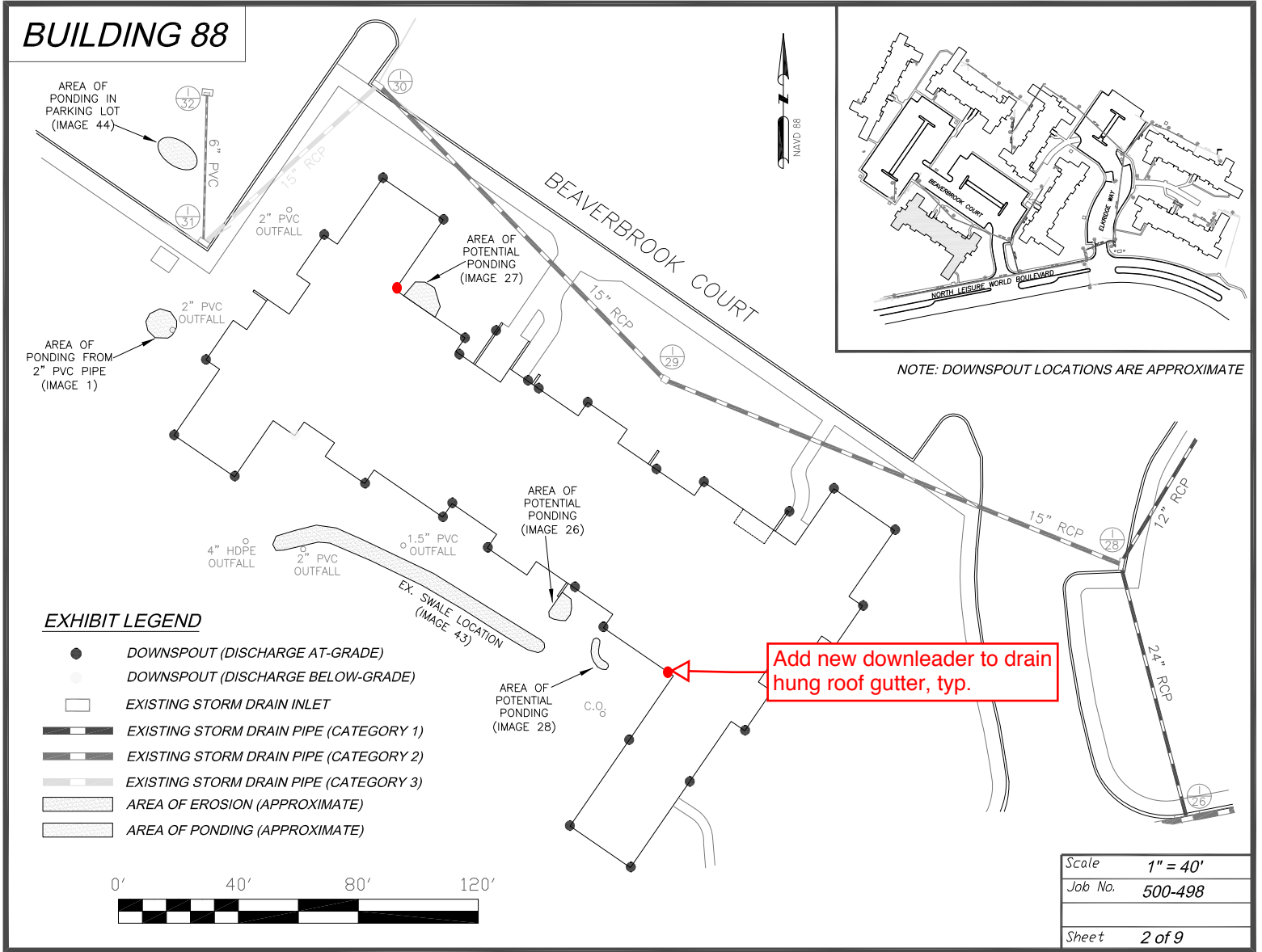


Approximate total of in-place gutters and downleaders for each building type:

Type 1:
32 downleaders
29 gutters

Type 2:
33 downleaders
29 gutters



Additional downleader locations noted on the plans assume resloping of gutters at their midpoint to drain half the gutter to the new downleader and half to the existing.

BUILDING 89



MH

3" PVC
OUTFALL

2" PVC
OUTFALL

CRUSHED AND
CLOGGED
DOWNSPOUT
(IMAGE 4)

MISSING
SPLASH BLOCK
(IMAGE 2)

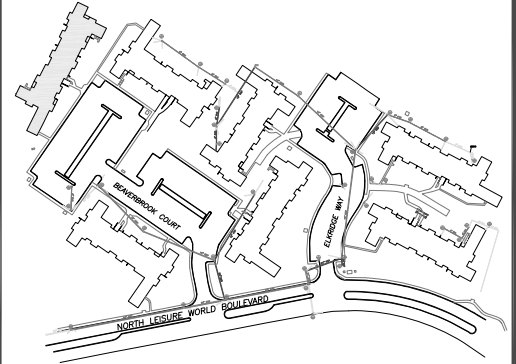
MISALIGNED AND
MISSING SPLASH
BLOCKS
(IMAGE 3)

3" PVC
OUTFALL

C.O.

2" PVC
OUTFALL

AREA OF
POTENTIAL
PONDING
(IMAGE 29)



NOTE: DOWNSPOUT LOCATIONS ARE APPROXIMATE

EXHIBIT LEGEND

- DOWNSPOUT (DISCHARGE AT-GRADE)
- DOWNSPOUT (DISCHARGE BELOW-GRADE)
- EXISTING STORM DRAIN INLET
- ▭ AREA OF PONDING (APPROXIMATE)

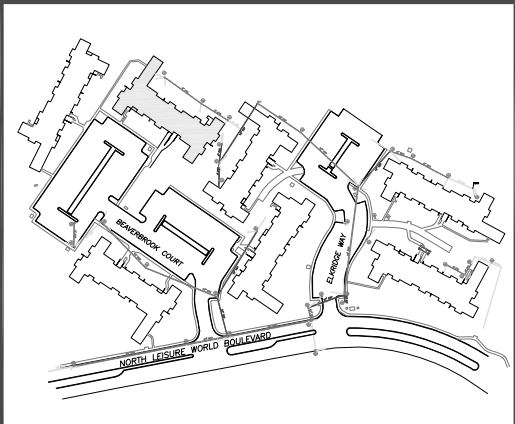
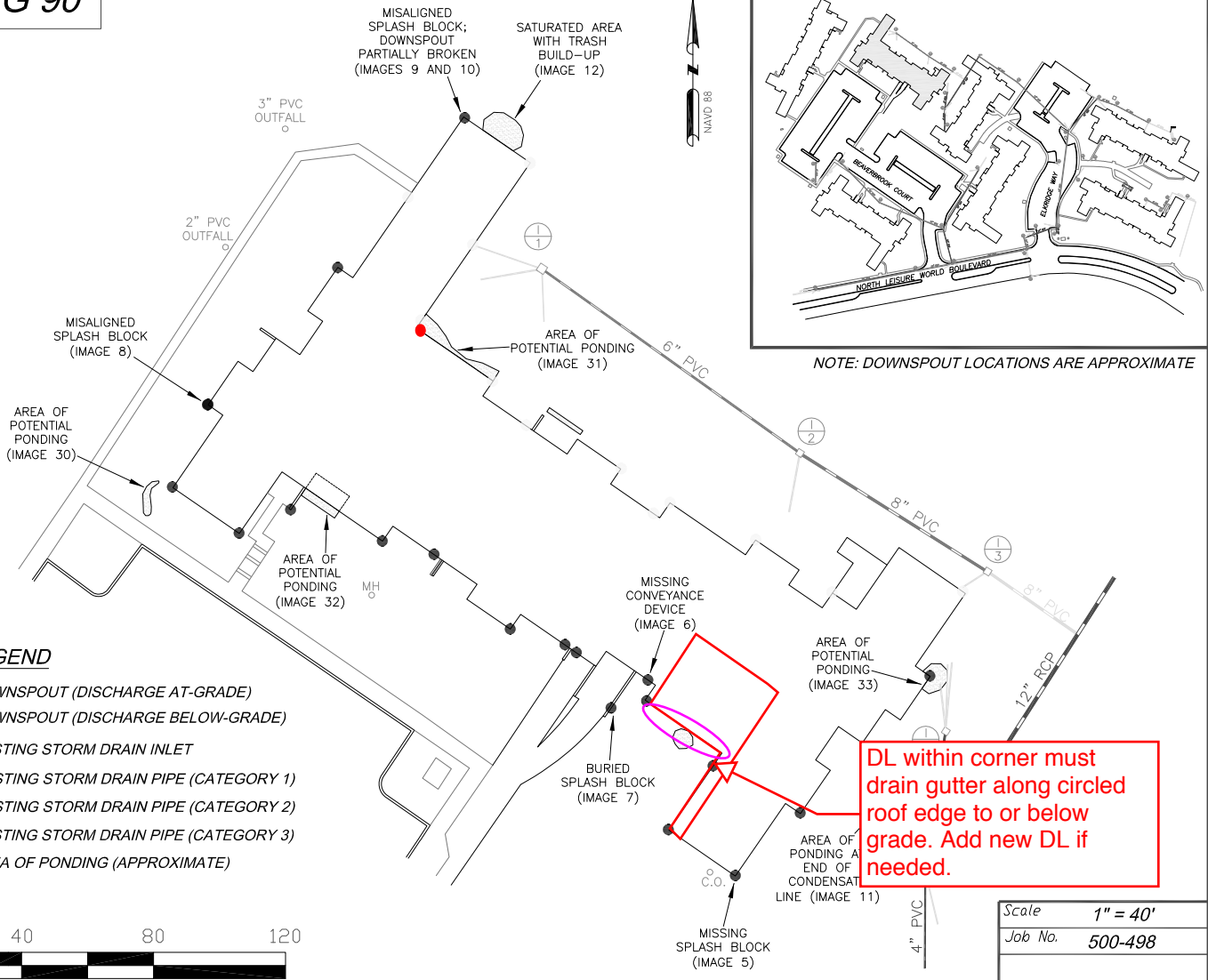


Scale 1" = 40'

Job No. 500-498

Sheet 3 of 9

BUILDING 90



NOTE: DOWNSPOUT LOCATIONS ARE APPROXIMATE

EXHIBIT LEGEND

- DOWNSPOUT (DISCHARGE AT-GRADE)
- DOWNSPOUT (DISCHARGE BELOW-GRADE)
- EXISTING STORM DRAIN INLET
- ▬ EXISTING STORM DRAIN PIPE (CATEGORY 1)
- ▬ EXISTING STORM DRAIN PIPE (CATEGORY 2)
- ▬ EXISTING STORM DRAIN PIPE (CATEGORY 3)
- ▭ AREA OF PONDING (APPROXIMATE)



Scale	1" = 40'
Job No.	500-498
Sheet	4 of 9

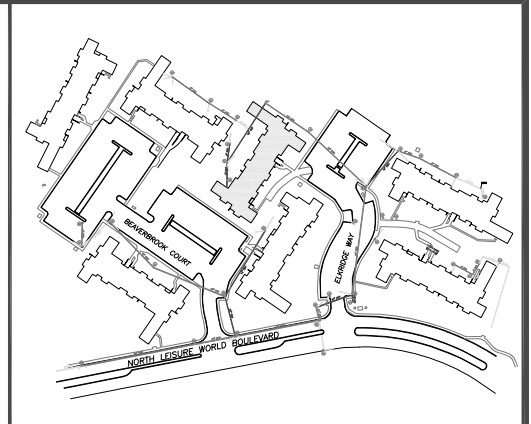
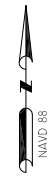
BUILDING 91

AREA OF EROSION (IMAGE 39)

AREA OF EROSION (IMAGE 40)

AREA OF POTENTIAL PONDING (IMAGE 34)

CLOGGED DOWNSPOUT; BURIED SPLASH BLOCK (IMAGE 13)



NOTE: DOWNSPOUT LOCATIONS ARE APPROXIMATE

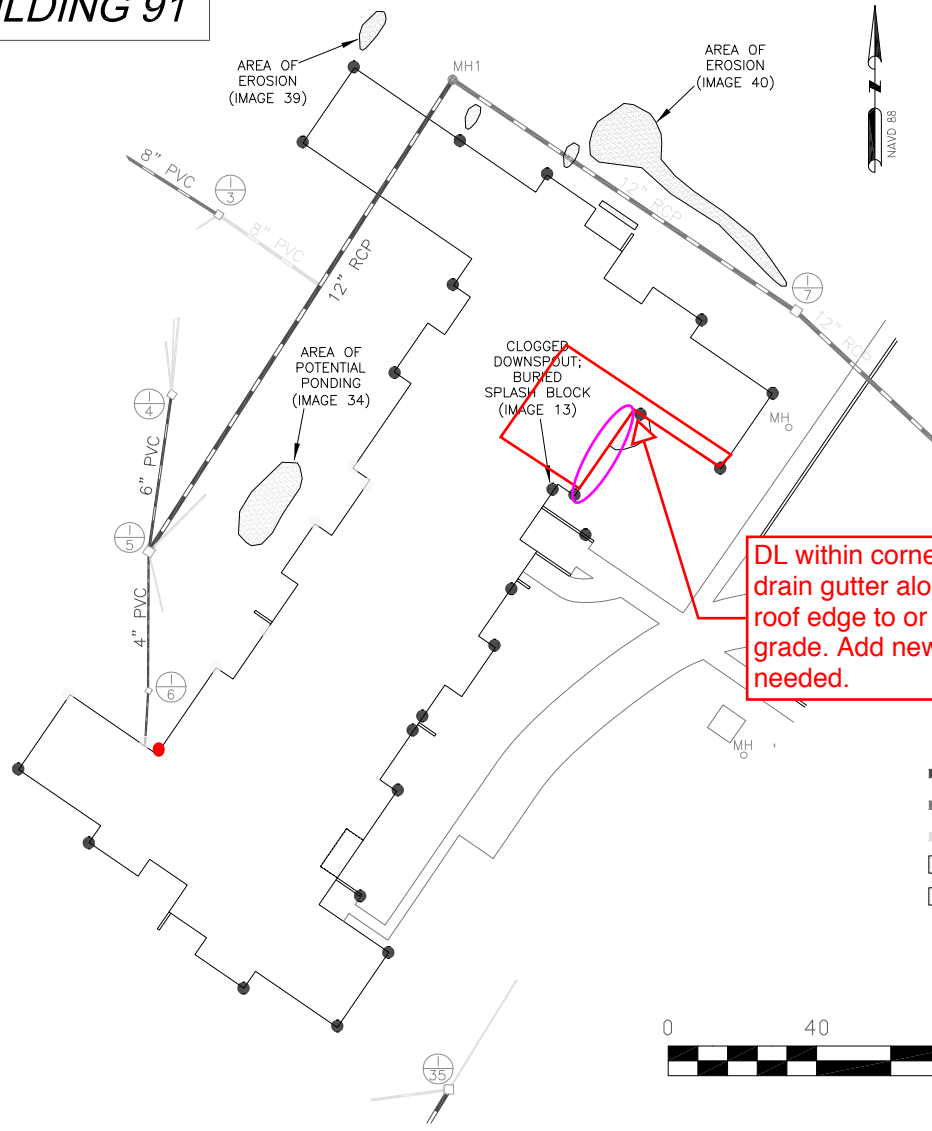
DL within corner must drain gutter along circled roof edge to or below grade. Add new DL if needed.

BEND

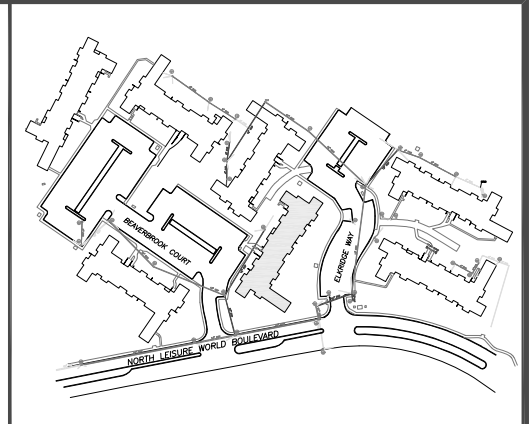
- DOWNSPOUT (DISCHARGE AT-GRADE)
- DOWNSPOUT (DISCHARGE BELOW-GRADE)
- EXISTING STORM DRAIN INLET
- EXISTING STORM DRAIN PIPE (CATEGORY 1)
- EXISTING STORM DRAIN PIPE (CATEGORY 2)
- EXISTING STORM DRAIN PIPE (CATEGORY 3)
- AREA OF EROSION (APPROXIMATE)
- AREA OF PONDING (APPROXIMATE)



Scale	1" = 40'
Job No.	500-498
Sheet	5 of 9



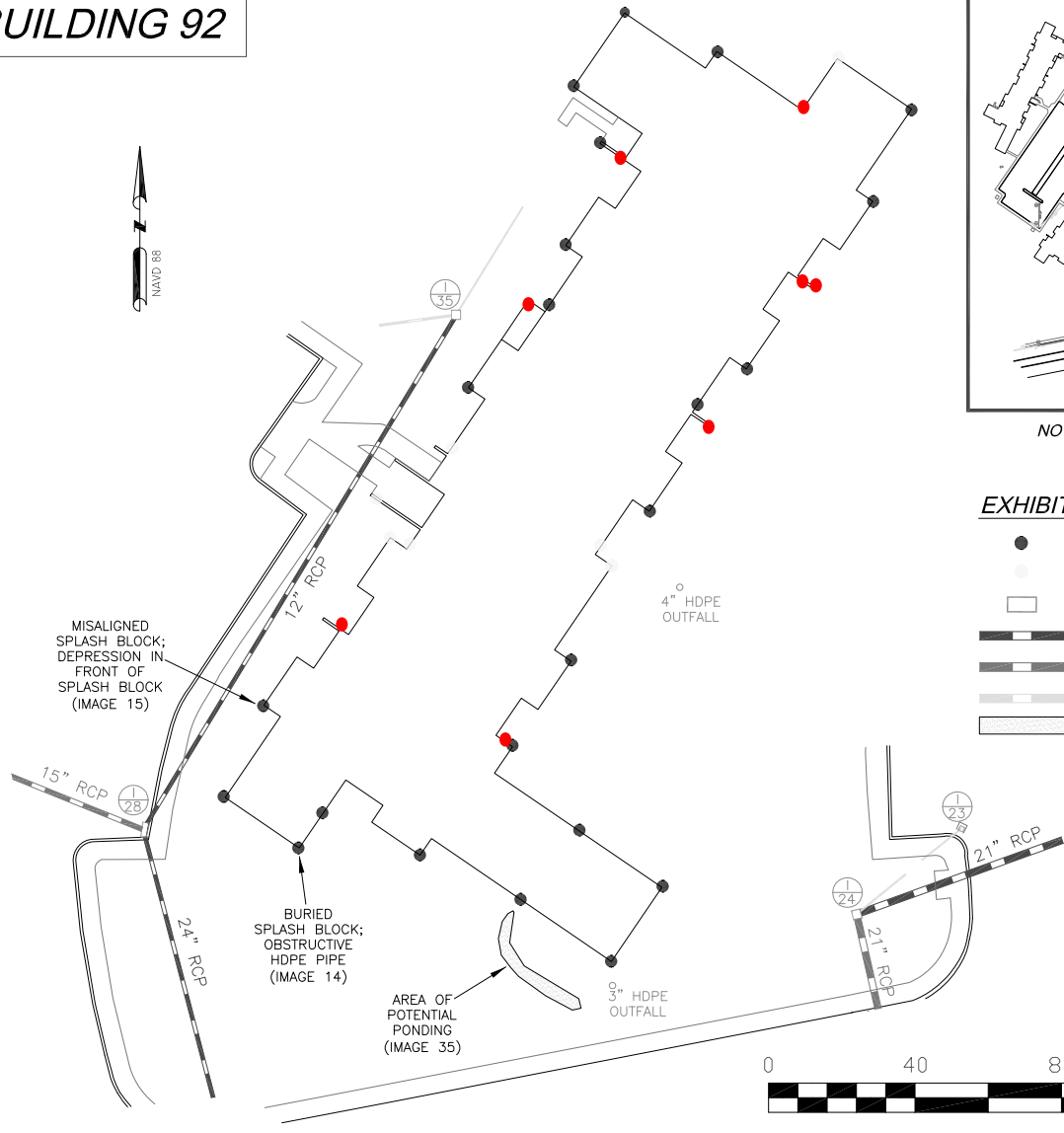
BUILDING 92



NOTE: DOWNSPOUT LOCATIONS ARE APPROXIMATE

EXHIBIT LEGEND

- DOWNSPOUT (DISCHARGE AT-GRADE)
- DOWNSPOUT (DISCHARGE BELOW-GRADE)
- EXISTING STORM DRAIN INLET
- ▬ EXISTING STORM DRAIN PIPE (CATEGORY 1)
- ▬ EXISTING STORM DRAIN PIPE (CATEGORY 2)
- ▬ EXISTING STORM DRAIN PIPE (CATEGORY 3)
- ▨ AREA OF PONDING (APPROXIMATE)

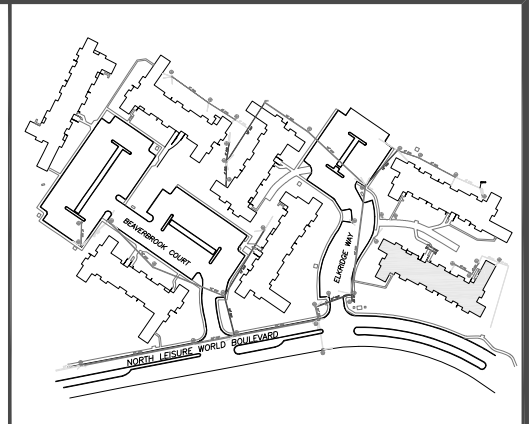


Scale	1" = 40'
Job No.	500-498
Sheet	6 of 9

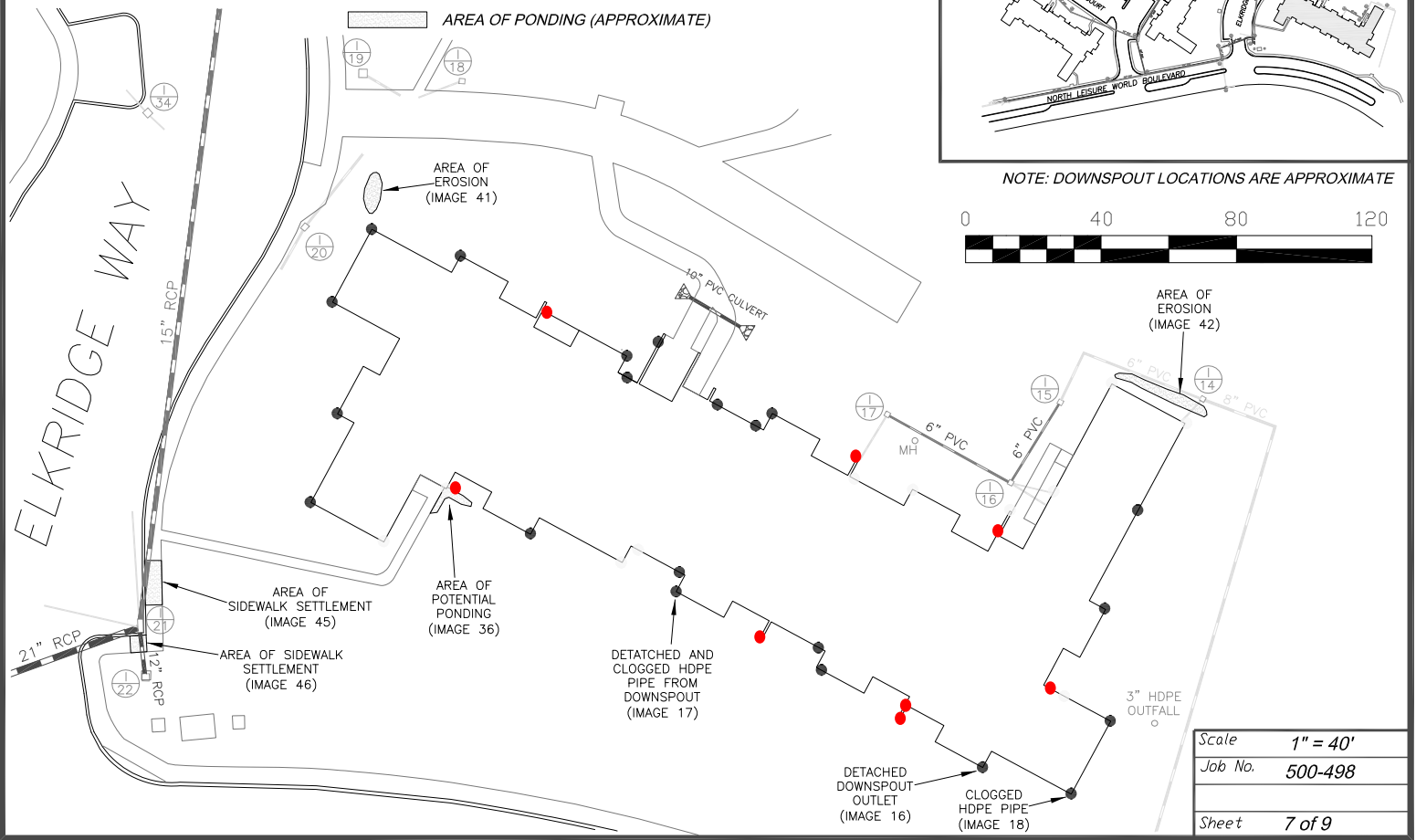
BUILDING 93

EXHIBIT LEGEND

- DOWNSPOUT (DISCHARGE AT-GRADE)
- DOWNSPOUT (DISCHARGE BELOW-GRADE)
- EXISTING STORM DRAIN INLET
- ▬ EXISTING STORM DRAIN PIPE (CATEGORY 1)
- ▬ EXISTING STORM DRAIN PIPE (CATEGORY 2)
- ▬ EXISTING STORM DRAIN PIPE (CATEGORY 3)
- ▨ AREA OF EROSION (APPROXIMATE)
- ▩ AREA OF PONDING (APPROXIMATE)



NOTE: DOWNSPOUT LOCATIONS ARE APPROXIMATE

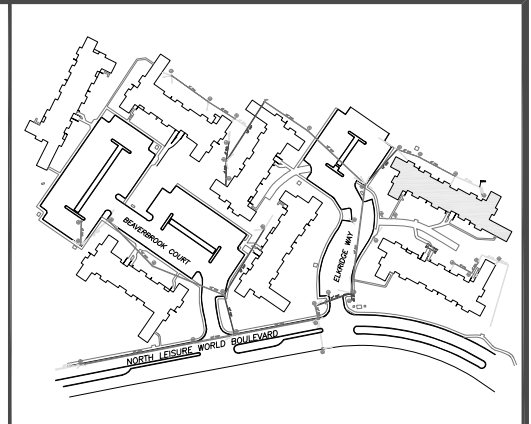


Scale	1" = 40'
Job No.	500-498
Sheet	7 of 9

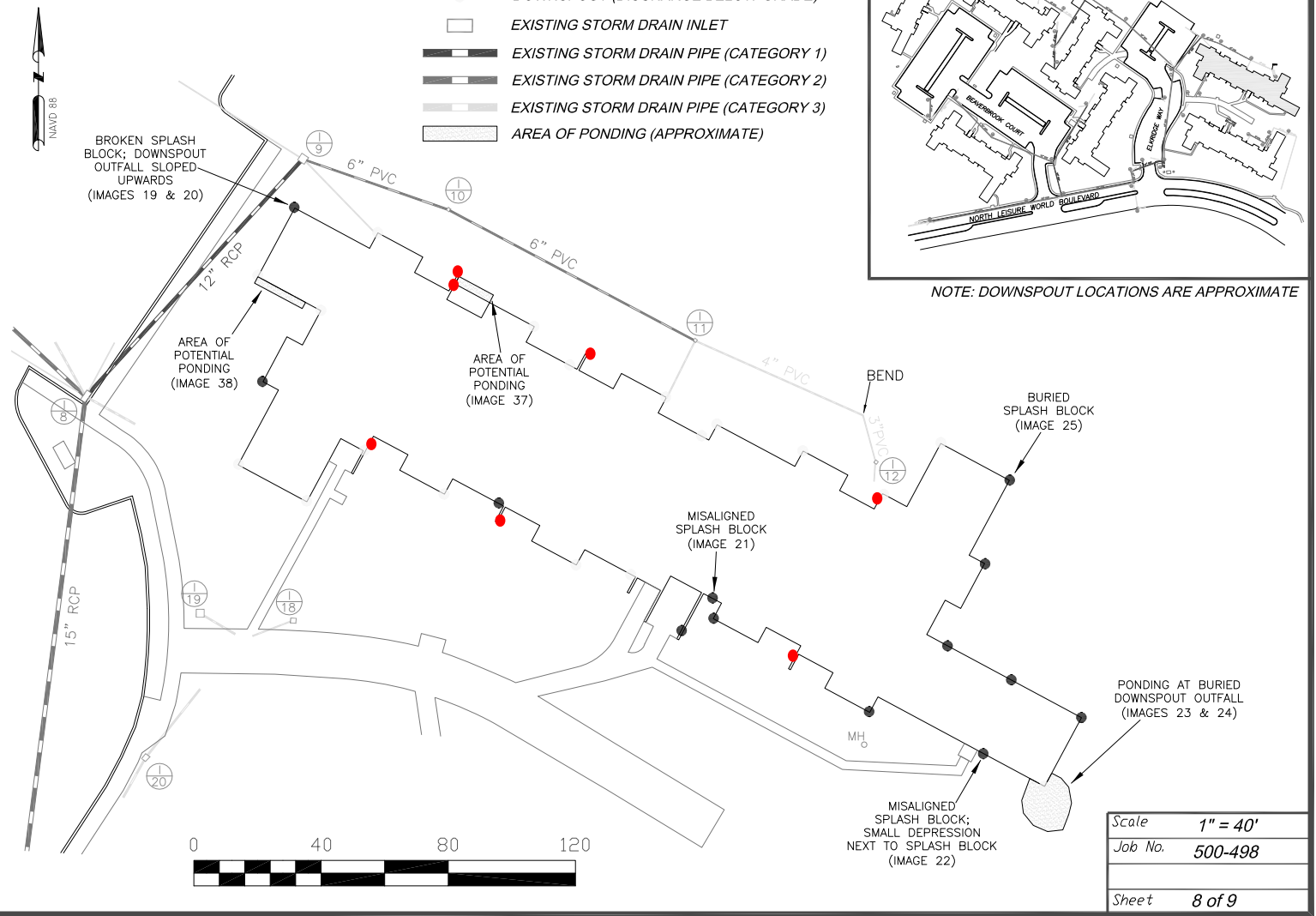
BUILDING 94

EXHIBIT LEGEND

- DOWNSPOUT (DISCHARGE AT-GRADE)
- DOWNSPOUT (DISCHARGE BELOW-GRADE)
- EXISTING STORM DRAIN INLET
- ▬ EXISTING STORM DRAIN PIPE (CATEGORY 1)
- ▬ EXISTING STORM DRAIN PIPE (CATEGORY 2)
- ▬ EXISTING STORM DRAIN PIPE (CATEGORY 3)
- ▭ AREA OF PONDING (APPROXIMATE)



NOTE: DOWNSPOUT LOCATIONS ARE APPROXIMATE



Scale	1" = 40'
Job No.	500-498
Sheet	8 of 9